

S MONE'

BRIGHTENING CREAM

REVEAL YOUR SKIN RADIANCE

SOLVE DARK SPOTS
& DULL SKIN PROBLEMS



EVEN SKIN TONE
& PERFECT HYDRATING IN **14** DAYS

S MONE`

SOLVE SKIN PROBLEMS



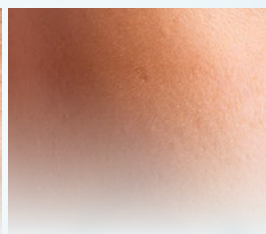
Dark spots



Uneven skin tone



Melasma & Freckles



Hyperpigmentation

PERFORMANCE AND RESULTS AFTER USE

Brightening
Even skin tone
naturally

(Results are only seen
through consistent use)

Suitable for
all skin types

Strengthen
skin barriers

Melasma &
Hyperpigmentation
Reduce age spots
and sun damage

Gel cream
Lightweight and
easy to absorb

Hydrate skin
Firmer and
smoother look

Tested

95%*

of product users
get more glowy, fresher,
and brighter skin

*Tested with subjects with uneven skin tone, melasma, and dark spots

**Tested with 100 men and women, July - Aug 2022

***This product cannot change natural skin tone, and results may vary depending on individual skin.



S MONE`

MIRACLE OF NATURAL EXTRACTS

For more radiant, glowy,
and brighter skin



NIO VCS

Encapsulated form of ethyl
ascorbic acid - 10 times
more effective than Vitamin C
- antioxidant with brightening
and skin-protecting
preparation effect



Clair BLANCHE - II
helps inhibit melanin
formation



CINDERELLACARE
suppresses the melanin
migration on skin



Fermented Honey
Gently exfoliates and
removes impurities

S MONE`

4 steps of S MONE` BRIGHTENING CREAM

step 1 ANTIOXIDANTS – PREVENT FREE RADICALS



NIO VCS

Encapsulated form of ethyl ascorbic acid - 10 times more effective than Vitamin C – antioxidant with brightening and skin-protecting preparation effect



Fullerene

Plant-derived fullerene, developed and imported from Japan, has a brightening and skin-protecting effect to prevent melanin formation

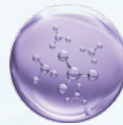
step 2 INHIBIT MELANIN FORMATION



Clair BLANCHE - II

Contains 7 natural ingredients Ougon extract, Tree peony extract, Arbutin, Strawberry geranium, Glutathione, Acetyl-Tyrosine,

and Aminopropyl ascorbyl phosphate. To help brighten skin naturally by inhibiting melanin formation that has been damaged by UV rays.



Tranexamic acid

An amino acid lysine helps inhibit epidermal melanocyte tyrosinase activity which results in a reduced amount of melanosome formation. When the expression of melanin is suppressed, the skin naturally repairs itself to look brighter.

step 3 INHIBIT MELANIN MIGRATION FROM DEEP TO THE TOP LAYER OF SKIN



CINDERELLACARE

Inhibits tyrosinase enzymatic activity in melanin synthesis and suppresses the melanin migration to the top layer of skin



Fermented Honey

AHA from Fermented Rose Honey gently exfoliates and rejuvenates skin, removes impurities, and dead skin cells for brighter skin

HYDRATE AND REPAIR SKIN BARRIERS



Beta-Glucan

Natural glucose form of Hyaluronic Acid in a triple helix structure to boost immune function in the skin to react with more force to invasive toxins to rejuvenate skin firmness



HYA 8 types Ultra Moisturizing Technology

Ultra-Moisturizing Technology helps its humectant properties in different molecule sizes to draw moisture into the skin to repair skin dryness, volume and plumpness, and dullness.



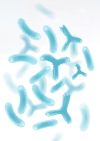
Chondrus Crispus Extract

From red seaweed in the deep ocean has a film-forming effect to hold water onto skin to improve skin hydration



Collagen Amino Acids

Produced in plant-based bio-factories to form a high-purity protein to fight against skin aging and to lighten skin tone



Bifida Ferment Lysate

A type of probiotic obtained by the fermentation of Bifidobacterium helps strengthen the skin's microbiome, encouraging its anti-irritation properties to visibly repair itself from skin damage.